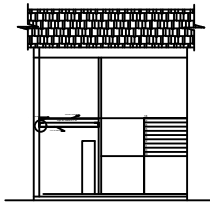
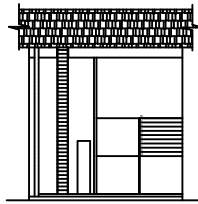


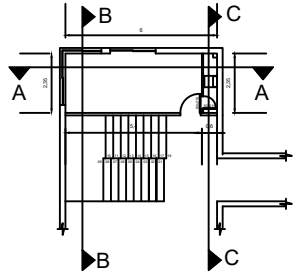
CORTE AA



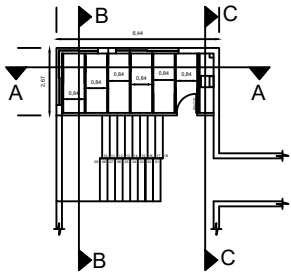
CORTE BB



CORTE CC

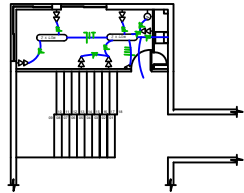
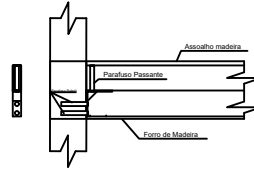


PLANTA BAIXA INFERIOR

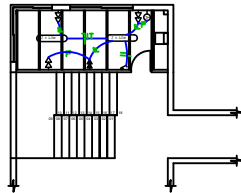


PLANTA BAIXA SUPERIOR

Detalhe I



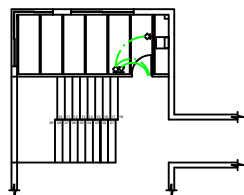
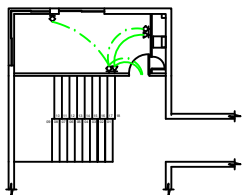
PLANTA BAIXA INFERIOR



PLANTA BAIXA SUPERIOR

LEGENDA

	TOMADA DUPLO DE ENERGIA ELÉTRICA 40 x 20mm
	TOMADA DUPLO DE ENERGIA ELÉTRICA 40 x 20mm
	TOMADA DUPLO DE ENERGIA ELÉTRICA 40 x 20mm
	INTERRUPTOR SIMPLER 1 TELA
	INTERRUPTOR 2 TELAS
	TOMADA DE TELEFONIA (RJ45)
	TOMADA DE LÓGICA (RJ45)
	PARAFUSO PILANTE
	PARAFUSO



PREFEITURA MUNICIPAL DE PALMEIRA
Projeto Arquitetônico/Elétrico

RESPONSÁVEL TÉCNICO

Fiscalização:

Engenheiro Civil - HEITOR BOSSO - Crea 103622-8

Projeto:

Engenheira Civil - SILVIANE DOS SANTOS - Crea 048769-6

OBRA:

Reforma e Manutenção Sala de Engenharia e Sala de Reuniões

PRANCHA:

ÚNICA

DATA:

09/01/2022

ÁREA:

48,00 m²

ESCALA:

1:50

DESENHO:

Silviane /Dione